

# Parkheath

*Sold on Service*

---

**Compayne Gardens NW6**

**£2,400 PCM (£554 per week) - Camden Band D**



Stunning and exceptionally spacious 1 bedroom apartment

Impressive 26' reception/dining room with wood flooring

First floor of double-fronted period conversion

Stylish, contemporary shower room

EPC Rating: D

West Hampstead Office 020 7794 7111

Recently refurbished and beautifully presented throughout

Private 20 south-facing terrace

Double bedroom with fitted wardrobes and direct access to the terrace

South Hampstead conservation area

Council Tax: Camden Band D

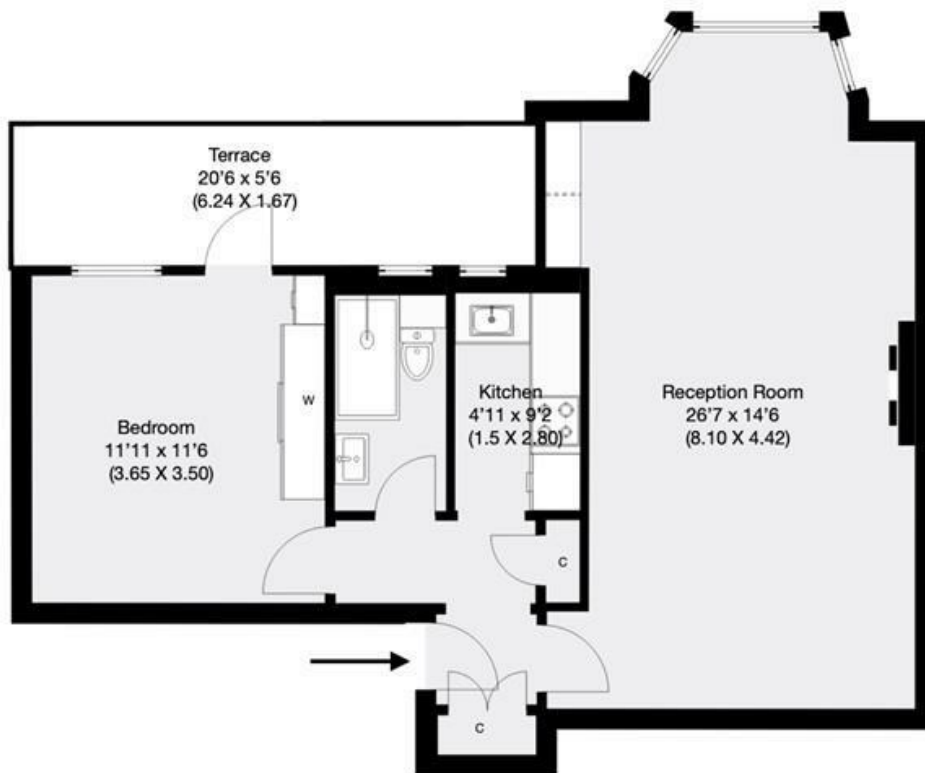


## Compayne Gardens, London, NW6

Approximate Gross Internal Area 62 sqm / 667 sqft



N



### First Floor

THIS FLOOR PLAN IS PRODUCED FOR PARKHEATH SUBMITTED BY ARCHIMEDIA web: [www.archi-media.co.uk](http://www.archi-media.co.uk)

Whilst every attempt has been made to ensure the accuracy of the floor plan contained here, measurements of doors, windows and rooms are approximate and no responsibility is taken for any error, omission or misstatement. These plans are for representation purposes only and should be used as such by any prospective buyer or lease. Specifically no guarantee is given on the gross internal floor area of the property if quoted on this plan and any figures given is initial guidance only and should be treated as such.

The particulars do not constitute part of an offer or contract. The particulars, including text, photographs and plans, are for the guidance only of prospective purchasers/tenants and must not be relied upon as statements of fact. The descriptions provided therein represent the opinion of the author and whilst given in good faith should not be construed as statements of fact. Nothing in these particulars shall be deemed a statement that the property is in good condition or otherwise or that any services or facilities are in good working order. All measurements are approximate